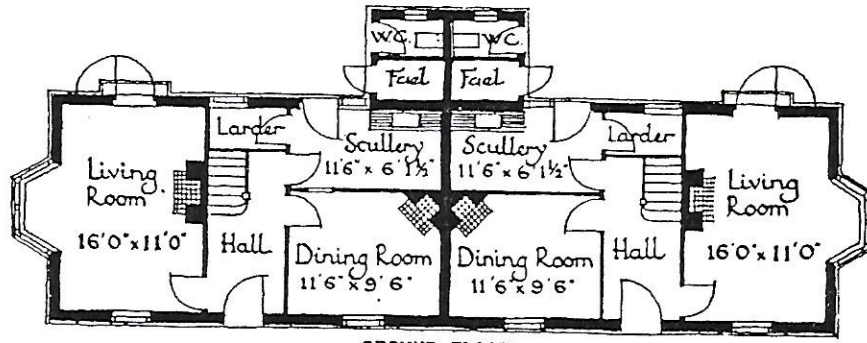
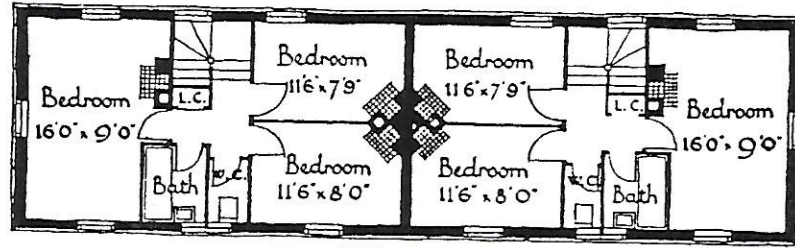


Nos. 65, 67, 68 & 70, VALLEY ROAD

Price £885 each



GROUND FLOORS



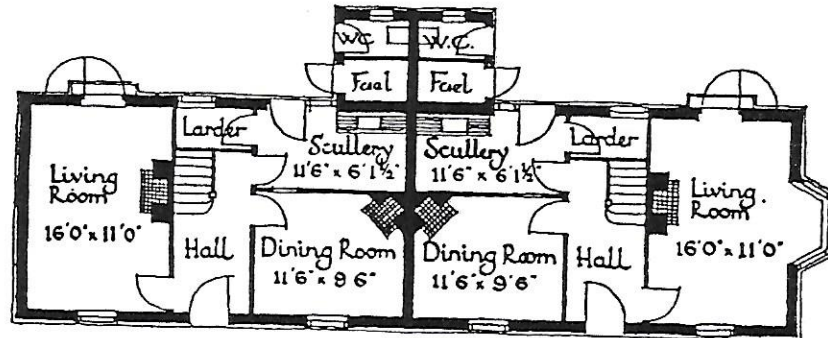
FIRST FLOORS

An economical design, much favoured by the small house seeker. Its through rooms are a great joy, giving plenty of light and air.

	No. 65	67	68	70
Size of gardens approx. :	100ft. x 100ft.	110ft. x 50ft.	74ft. x 124ft.	56ft. x 135ft.
Ground Rent per ann.	£13 0 0	£9 10 0	£12 10 0	£11 10 0
Completion :	End November, 1924.		Mid November, 1924.	
	Lease 999 years.			

Nos. 61 & 63, VALLEY ROAD

Price £885 each



GROUND FLOORS

First Floors : Same as for Nos. 65 to 70, Valley Road, as above.

	No. 61	No. 63
Size of gardens approx. :	40ft. x 108ft.	40ft. x 110ft.
Ground Rent per ann.	£6 10 0	£7 0 0
Completion :	Early November, 1924.	
	Lease 999 years.	