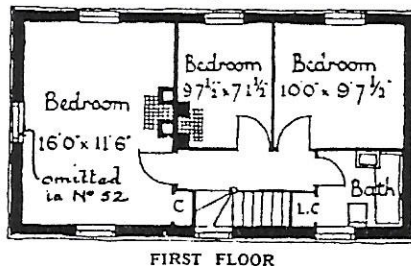
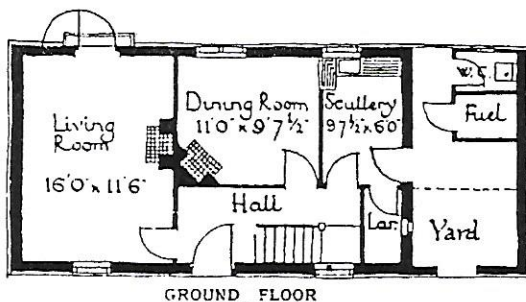


No. 52, VALLEY ROAD

Price £925



A soundly built detached house; very pleasing in elevation and giving convenient accommodation for a small house at a low figure.

Lease 999 years. Ground Rent £9 9 0 per annum. Size of Garden approx.: 47 ft. x 145 ft. Completion, end September, 1924; approx.

66 & 88, VALLEY ROAD, as above, but with bay to living room and additional window to Bedroom 1

Price £925 each

	No. 66	No. 88
Ground Rent per annum	£8 0 0	£12 10 0
Size of Garden	53ft. x 87ft.	60ft. x 138ft.
Completion	Early November, 1924	End December, 1924.

Lease 999 years.

For further particulars and plans, etc., for all other houses, apply:—

**SURVEYOR, ESTATE OFFICE,
WELWYN GARDEN CITY, HERTS.**

HOURS: 9 a.m. to 6 p.m. daily, including Saturday.
TELEPHONE: Welwyn Garden 248 (toll call from London).
ESTATE OFFICE: Two minutes' walk from Station.
Book to "Welwyn Garden City" Station —(not "Welwyn").