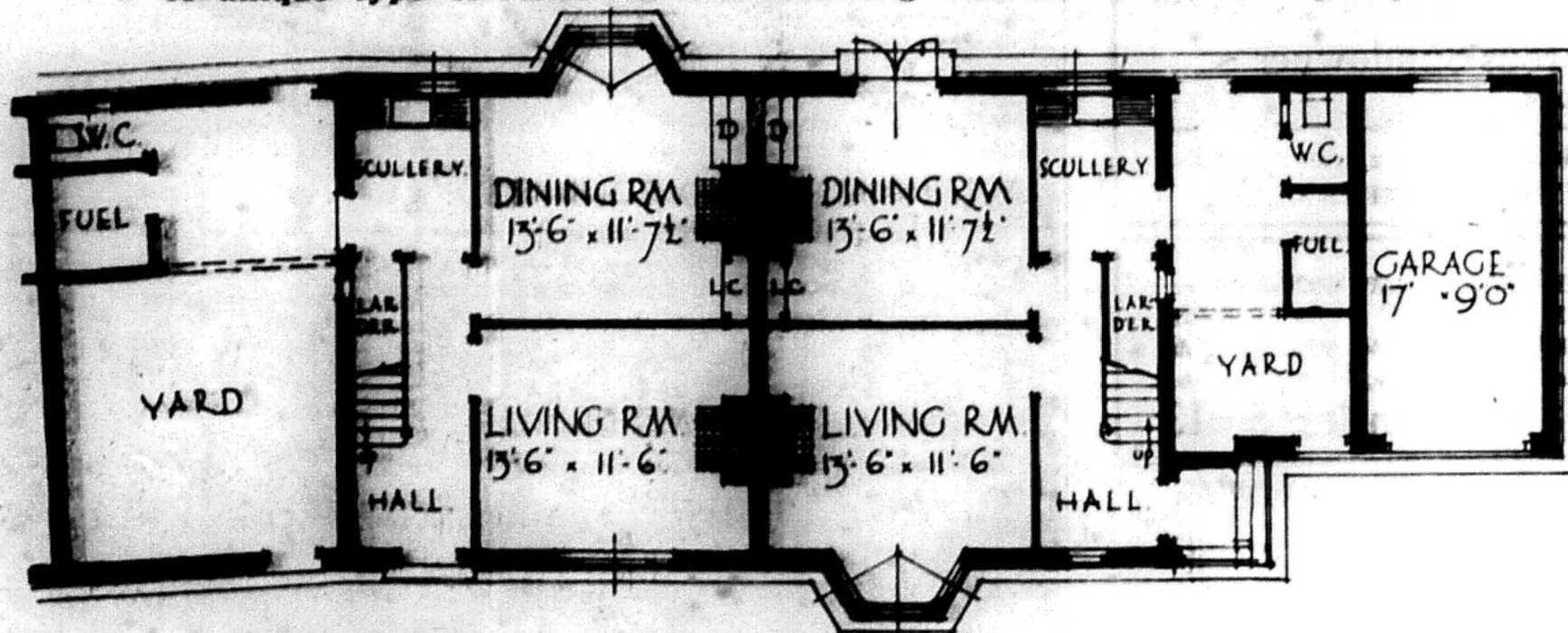


PAIR WELL-PLANNED HOUSES---BARLEYCROFT ROAD

WELWYN GARDEN CITY, HERTFORDSHIRE

READY TO MOVE INTO AT ONCE

A unique type of residence—Labour-saving and economical in upkeep.



Price £915

GROUND FLOOR

Price £975

The First Floor contains 3 Bedrooms, Bathroom, fitted Bath and Lavatory Basin, also W.C.

PURCHASE OUT OF INCOME—CASH £135 and balance as Rent at £68 5s. per annum, spread over 20 years. Lease 999 years. Ground Rents £11 to £13 per annum.

Brochure from

SURVEYOR, ESTATE OFFICE, WELWYN GARDEN CITY.

Telephone: Welwyn Garden 248.